



Solutions Through Partnership

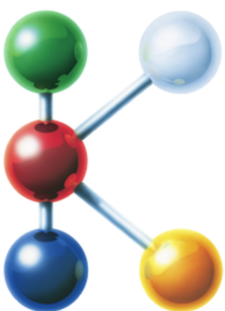
# TSM Control Systems at K2025

## Evergreen

Maximizing Existing Equipment



*K Show 2025 – Düsseldorf | 8–15 October*



**2025**  
8-15 OCTOBER  
Düsseldorf, Germany

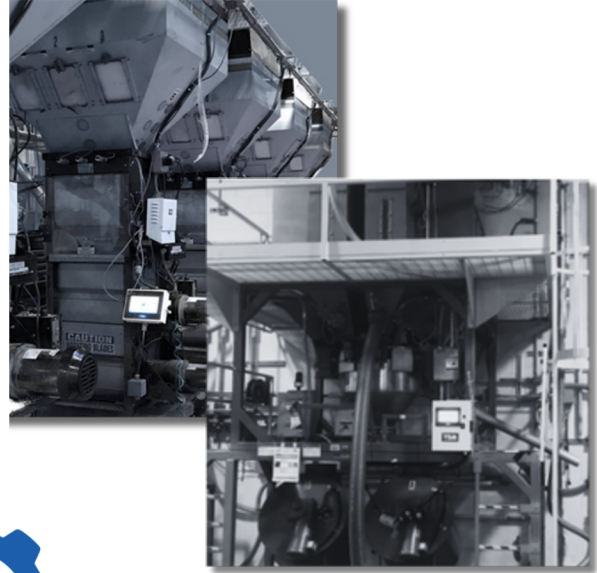


**Stand Location**  
**Hall 10, H22**

# BREATHE THE NEW LIFE INTO EXISTING EQUIPMENT

In a market where sustainability and cost control are critical, replacing entire production lines isn't always viable. That's why TSM is focused on retrofits – upgrading existing assets with modern control systems that extend life, cut waste, and unlock new performance.

The new Nexus Next Generation Controller offers a clear upgrade path for processors seeking the benefits of advanced automation without the disruption of a full replacement.



## NEXUS CONTROLLER

Connecting you to efficiency

The Nexus Controller is a plug-and-play retrofit solution compatible with both TSM and equipment from other manufacturers. Fully backward compatible with legacy NBB controllers, Nexus introduces advanced extrusion algorithms, intuitive touch-screen operation, and remote diagnostics. It improves yield, reduces energy consumption, and provides a smoother operator experience – all while safeguarding existing hardware investments.

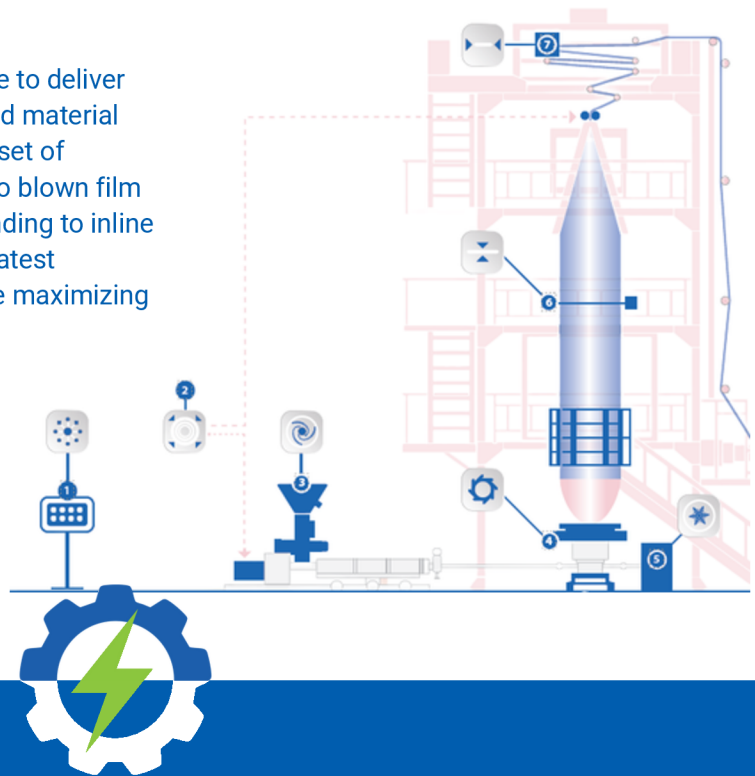
- Retrofit-ready, plug-and-play integration
- Backward compatible with TSM NBB controllers
- Advanced algorithms improve yield and gauge control
- Remote diagnostics and connectivity for faster service
- Extends equipment life while avoiding costly replacements

**NEW**



# Extrusion Solutions

Extrusion processors face constant pressure to deliver higher output, better film quality, and reduced material costs. At K 2025, TSM presents a complete set of solutions that bring stability and efficiency to blown film production. From advanced gravimetric blending to inline process control and intelligent cooling, our latest technologies ensure consistent results while maximizing yield.



## OPTI-X MK2 Range

The latest generation of our continuous gravimetric blender has been redesigned for higher throughput and improved dosing accuracy. With models covering 10 - 1000 kgh and up to 8 materials, Opti-X delivers precision material feeding for your extrusion process. Its compact frame and modular architecture make it ideal for processors who want dependable performance with flexibility for future upgrades.

**NEW**  
ENHANCED  
EXTRUSION YIELD  
CONTROL  
ALGORITHM



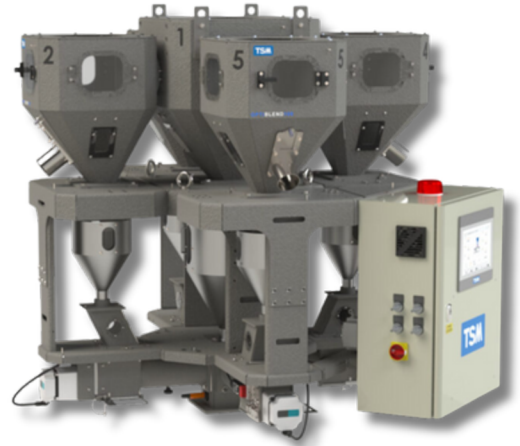
# OPTI-BLEND MK2 RANGE

NEW

## Multi Component Continuous LIW Blending

Opti-Blend is TSM's flagship modular gravimetric blender, designed to deliver accuracy, flexibility, and confidence in every production run.

Its modular build allows processors to expand capacity or add components as needs evolve, while fast clean-down and user-friendly controls minimize downtime. Opti-Blend integrates seamlessly into extrusion and blown film lines, making it the dependable choice for processors focused on efficiency and quality.



# LINEVIEW

## Line Management and Control

LineView is TSM's centralized line monitoring and control platform, built to give processors total visibility across their extrusion process. By linking Opti-X Blending and the SmartLip Auto Gauge Control with downstream extraction parameters, LineView provides operators with a single, intuitive interface.

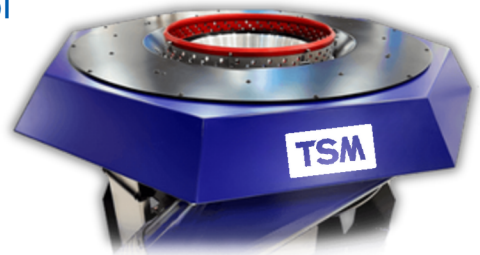
Real-time dashboards display throughput, energy usage, and material consumption, while historical data logging enables traceability and continuous improvement. With integrated alarms and remote diagnostics, LineView helps reduce downtime and ensures every production run delivers consistent quality with less waste.



# SMARTLIP ONE PRIMARY AIR RING

## Cooling and Auto-Gauge Cross Direction Control

The Smartlip One Air Ring, is a critical component for the quality and performance of blown-film extrusion lines. Designed to deliver high performance and quality efficiencies, the air ring ensures optimal properties for the manufacture of technical films while reducing production cost and increasing extruder production capacity.



The air ring is equipped with motorized actuators that adjust airflow through the radially located channels in response to the mapped thickness profile. It controls 100% of the airflow to the dual lips, providing maximum control capability for gauge variation. The air ring offers better control of geometry, bubble stability, and thickness profile correction thanks to its unique mechanical design.

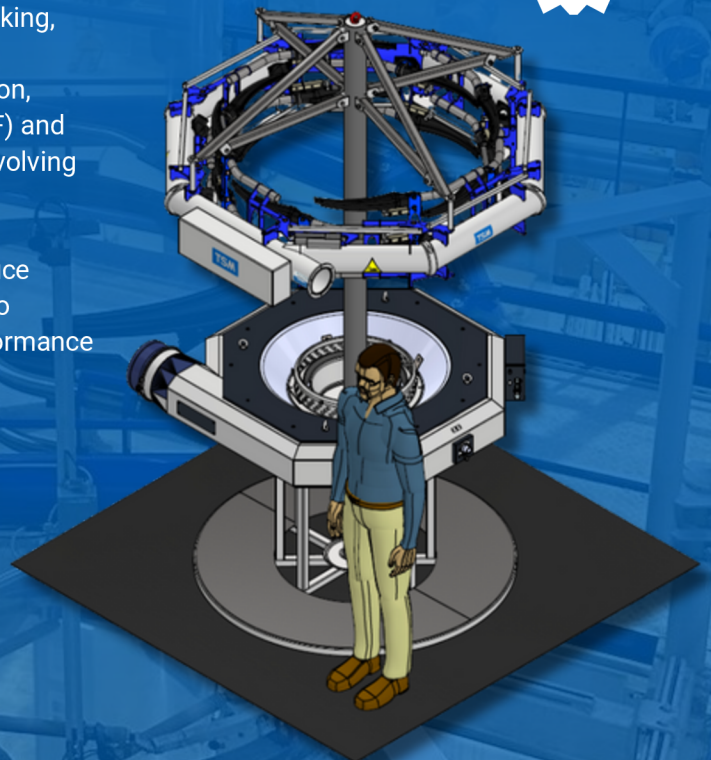


# OPTI-COOL SECONDARY COOLING RING

TSM's Opti-Cool is a next-generation secondary air ring designed to improve cooling efficiency, reduce blocking, and enhance film flatness in blown film extrusion. Developed to meet the needs of Blown Film Extrusion, Opti-Cool is available in both single-directional (SDF) and dual-directional (DDF) configurations to meet the evolving needs of global film processors.

Whether you're looking to stabilise tacky films, reduce wrinkle formation, or recover lost productivity due to cooling limitations, Opti-Cool delivers smarter performance with minimal integration effort.

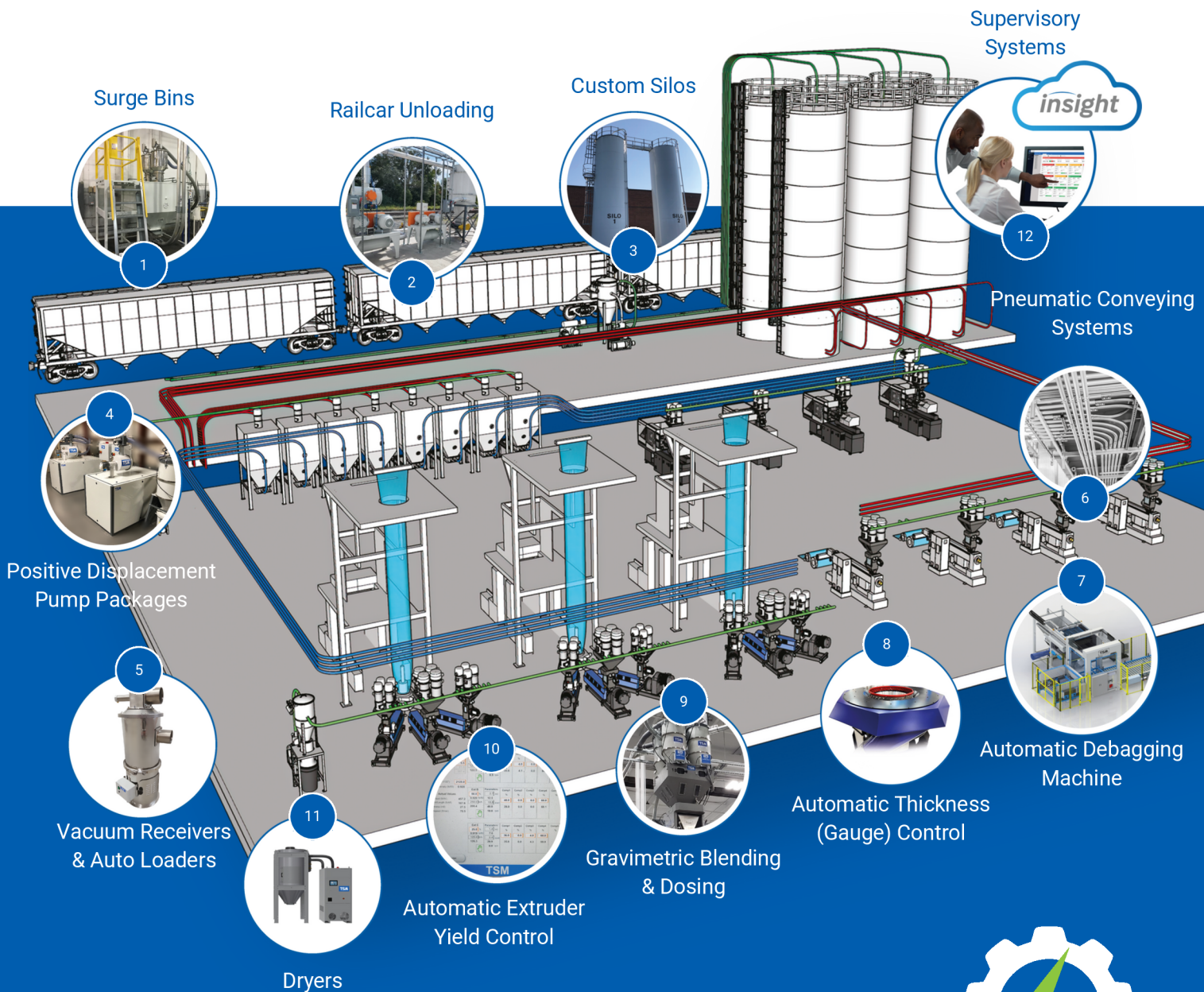
NEW



# TURNKEY SOLUTIONS

Employing a highly trained and engaged workforce, proven technology and world class partners, TSM has the knowledge and experience in Plastics processing to deliver full turnkey solutions from Silo to machine allowing our clients to focus on what they do best.

From concept through to realization, TSM is with you all the way to ensure all project objectives are fully delivered. The strength and depth of TSM's process knowledge gained on similar projects worldwide ensures we can bring the best in class solutions to our customers.



# AUTOMATIC DEBAGGING SOLUTIONS

Elevate your material handling process

Discover TSM's Automatic Debagging System - a pivotal step towards smarter, safer, and more sustainable material management.

This innovative solution embodies efficiency and safety, significantly reducing labor and enhancing the smoothness of your operation. Designed for the modern industrial environment, our system streamlines bulk material handling with advanced technology and simplified operations.

**NEW**  
MODELS  
AVAILABLE



## OPTI-FLAKE FB-S SERIES

The ever-increasing costs for polymers and additives mean it has never been more important to ensure materials are dosed accurately and are homogeneously mixed. The Opti-Flake gravimetric batch blender solves this problem thanks to its unique, patented mixing system and slide gate technology.

- Larger Slide Valve Design
- Large Discharge opening
- Optional Ultrasonic non-contact switching sensor
- Faster Product Changes
- Continuous Homogeneous Mixing
- Increased Regrind Usage
- Product Consistency
- High Accuracy Dispensing up to 0.01% of Batch
- Easily Removable Hoppers
- Full Reporting Capability and Self-Optimizing Software

**NEW**  
ENHANCED  
REGRIND  
CONFIGURATION





Solutions Through Partnership

# Evergreen

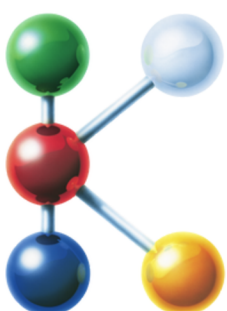
Maximizing Existing Equipment



## Let's Shape the Future Together

K Show 2025 – Düsseldorf | 8–15 October

We look forward to welcoming our partners and customers to the stand.



**2025**  
8-15 OCTOBER  
Düsseldorf, Germany



**Stand Location**  
**Hall 10, H22**