

Specialists in Gravimetric Blending & Controls

# WEIGH SCALE BLENDER UPGRADE

# TSM



## Benefits

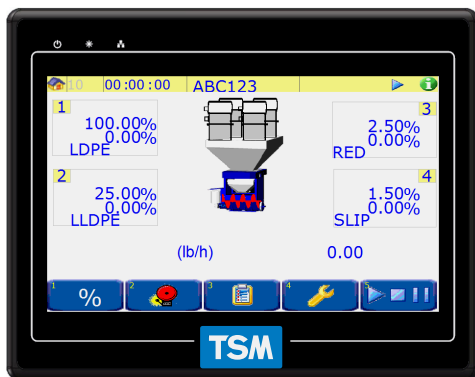
- Faster Order Changes
- Faster Control Response
- SD Card Data Diagnostic Log
- Real-Time Load Cell Check
- Incident Log
- Password Protection
- Easily Exchangeable Module

## User Interface

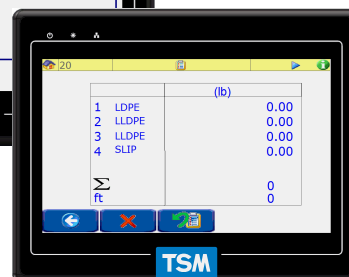
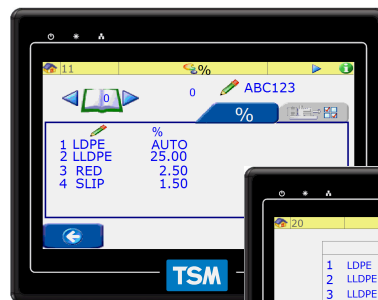
- Intuitive Operator Functionality
- Comprehensive Report/Alarm Management
- Built-in Trending & Data History Management
- Industry Standard Communication Protocols

## Features

- Ethernet Port
- Two USB Ports
- SD Card for Data logging and software updates
- 24 Bit load cell interface



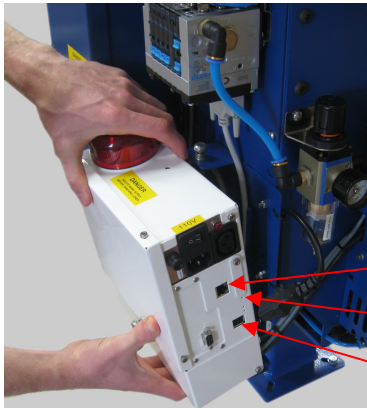
*Remote Operator Touch Screen*



*TSM Batch Blender Upgrade Control Box*

[www.tsm-controls.com](http://www.tsm-controls.com)

# BLENDERUPGRADE



*Simple No Tools Needed  
Control Box Interchange*

- UPGRADE BOX REPLACES OLD BLENDER ELECTRONICS
- BOX AND MOUNTS DIRECTLY ON TO THE EXISTING BLENDER FRAME.

ETHERNET PORT

DUST PROTECTED SD MEMORY CARD SLOT

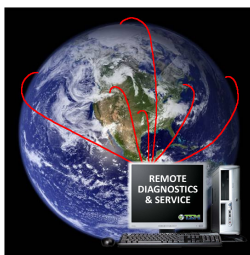
2 X USB PORTS ARE EASILY ACCESSIBLE



*TSM Batch  
Blender Upgrade*

NEW MODULAR FESTO SOLENOID BLOCK WITH ACTIVATION INDICATOR.

A "D TYPE" CONNECTOR ALLOWS SIMPLE AND RAPID REPLACEMENT WITHOUT TOOLS.



## REMOTE ACCESS VIA ETHERNET:

- REMOTE SOFTWARE DOWNLOADS VIA FTP
- REMOTE DIAGNOSTICS VIA TELNET
- E-MAILED INCIDENT ALERTS & REPORTS

The TSM control module can be easily replaced, and contains all of the system electronics including the system 24 Volt power supply.

The module can be disconnected and replaced without tools to minimize any possible downtime.

Each load cell is connected via a separate interface module providing rapid and precise measurement.



*TSM Continuous  
Blender Upgrade*

**UPGRADE TODAY AND IMPROVE  
YOUR PRODUCTION FOR THE FUTURE!**

### European Office

**TSM**  
Ard Easmuinn, Dundalk,  
Co. Louth, Ireland.

**Tel:** +353-42-9335560  
**Fax:** +353-42-9334422

**General Info:**  
info@t-sm-controls.com  
**Sales:**  
sales@t-sm-controls.com  
**Support:**  
service@t-sm-controls.com

### North America Regional Offices

**TSM Inc.**  
1505 Johnson Ferry Road  
Marietta, GA 30062, USA.

**Tel:** (770)886-6630  
**Fax:** (770)886-2395

**General Info:**  
info@us.t-sm-controls.com  
**Sales:**  
sales@us.t-sm-controls.com  
**Support:**  
service@us.t-sm-controls.com

**TSM Inc.**  
1404 Joliet Road  
Romeoville, IL 60446, USA.

### Asia-Pacific Regional Office

**TSM Taiwan**  
Siangshang Street  
Taichung City, Taiwan,

**Tel:** +886-4-24728185  
**Fax:** +886-4-24728180

**General Info:**  
info@t-sm-controls.com.tw  
**Sales:**  
sales@t-sm-controls.com.tw  
**Support:**  
service@t-sm-controls.com.tw

### China Regional Office

**TSM China**  
Office Tower, China Hotel  
122 Liuhua Road, Guangzhou, China

**Tel:** +86-20-86266016  
**Fax:** +86-20-86266015

**General Info:**  
china@t-sm-controls.com  
**Sales:**  
china@t-sm-controls.com  
**Support:**  
china@t-sm-controls.com