

Solutions Through Partnership

# OPTIMIX MK2 3000 SERIES

Advanced Dosing Solutions



# TSM

## Features

- Faster Product Changes
- Continuous Homogeneous Mixing
- Increased Re grind Usage
- Product Consistency
- High Accuracy Dispensing up to 0.01% of batch

## User Interface

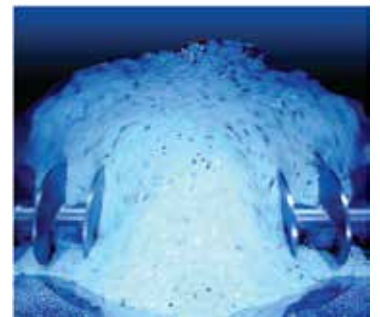
- Intuitive Operator Functionality
- Comprehensive Report / Alarm Management
- Built-in Trending & Data History Management
- Industry Standard Communication Protocols
- Material Usage / Inventory Statistics & Reports



## 3000 OPTIONS

- Powder Dosing
- Flange Adapters
- Offline Blending
- Automatic Cleaning
- Integrated Material Handling

**OPTI-MIX 3000** Batch Blender can accommodate up to twelve components while providing throughput rates up to 3000kg/hr (6,600lb/hr). OPTI-MIX 3000 utilizes TSM slide valve design and the patented reverse-flight auger mixing technology. This combination provides superior accuracies, blend ratios and mixing homogeneity that sets a new standard for the industry. All components are blended by weight, based on the preset blend ratios entered on the touch screen. Each component is metered separately into a single weigh hopper, which measures and controls their percentage.



**Patented Mixing Technology  
Reverse Flight Auger**

[www.tsm-controls.com](http://www.tsm-controls.com)

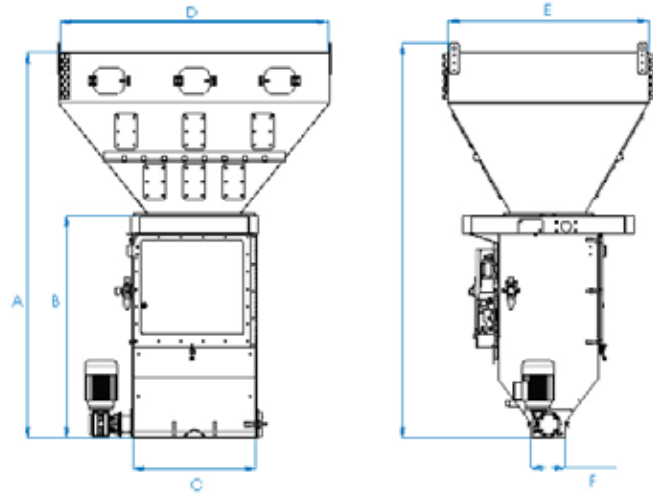
# OPTIMIX MK2 3000

## Advanced Dosing Solutions

BLENDER MODEL	STD. NO. OF COMPONENTS	MAX. NO. OF COMPONENTS	STD. BATCH SIZE	STD. UNIT THROUGHPUT	EASY DRAIN	MAX. NO. OF SIDE FEEDERS	MAX. MICRA-DOSE SIDE FEEDERS	MAX POWDER SIDE FEEDERS	MAX AUGER SIDE FEEDERS	LIQUID DOSING SIDE FEEDER	AUTO-CLEAN INTERNAL	BIN BLOW DOWN AUTO-CLEAN	MATERIAL BYPASS AUTO-CLEAN	AUTO-DRAIN
OPTI-MIX 3000 8C	8	12	25kg	3000 kg/hr (6600 lb/hr)	No	4	4	2	4	Opt	Opt	Opt	Opt	N/A
OPTI-MIX 3000 6C	6	10	25kg	3000 kg/hr (6600 lb/hr)	No	4	4	2	4	Opt	Opt	Opt	Opt	N/A

### Specifications

Blender Weight	(kg / lb)	225 / 495
Max Material Temp	(°C / °F)	70 / 158
Max Optional Material Temp	(°C / °F)	130 / 266
Mix Chamber Discharge Hole	(mm/")	102 / 4



### Dimensions

BLENDER MODEL	A	B	C	D	E	F
OPTI-MIX 3000 6 Component	1924mm 75.74"	1110mm 43.70"	612mm 24.09"	1350mm 53.15"	1000mm 39.37"	170mm 6.69"
OPTI-MIX 3000 8 Component	1924mm 75.74"	1110mm 43.70"	612mm 24.09"	1355mm 53.35"	810mm 31.89"	170mm 6.69"

#### European Office (Headquarters)

##### TSM

TSM Control Systems,  
Finnabair Industrial Estate,  
Dundalk, Co. Louth,  
Ireland

Tel: +353-42-933-5560

##### Email:

General: info@tsm-controls.com  
Sales: sales@tsm-controls.com  
Support: service@tsm-controls.com

#### North America Regional Office

##### TSM Inc.

1505 Johnson Ferry Road,  
Marietta, GA 30062, USA  
  
1404 Joliet Road,  
Romeoville, IL 60446, USA

Tel: (770)-886-6630

##### Email:

General: info@us.tsm-controls.com  
Sales: sales@us.tsm-controls.com  
Support: service@us.tsm-controls.com

#### Asia-Pacific Regional Office

##### TSM Taiwan

No.13 Siangshang 1st Street,  
West District,  
Taichung City 403,  
Taiwan

Tel: +886-4-2472-8185

##### Email:

General: info@tsm-controls.com.tw  
Sales: sales@tsm-controls.com.tw  
Support: service@tsm-controls.com.tw

#### China Regional Office

##### TSM China

Room 2423, No. 983, International Port  
Center (IPC), HuangPu Avenue (East),  
HuangPu District, GuangZhou City,  
China

Tel: +86-139-2506-2596

##### Email:

General: china@tsm-controls.com  
Sales: china@tsm-controls.com  
Support: china@tsm-controls.com