

Solutions Through Partnership

OPTIMIX MK2

1000/1500 SERIES

Advanced Dosing Solutions



Standard Version

Easy-Drain Version

TSM

Features

- Faster Product Changes
- Continuous Homogeneous Mixing
- Increased Re grind Usage
- Product Consistency
- High Accuracy Dispensing up to 0.01% of batch

User Interface

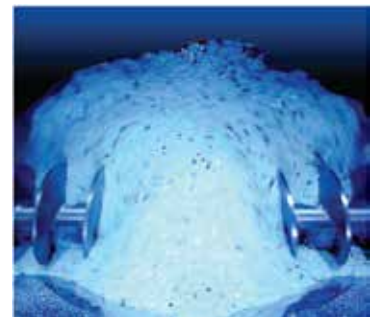
- Intuitive Operator Functionality
- Comprehensive Report / Alarm Management
- Built-in Trending & Data History Management
- Industry Standard Communication Protocols



1000/1500 OPTIONS

- Extrusion Control
- Powder Dosing
- Flange Adapters
- Offline Blending
- Automatic Cleaning
- Integrated Material Handling

OPTI-MIX MK2 1000/1500 Series Batch Blenders can accommodate up to eight components while providing throughput rates up to 1000 kg/hr (2200lb/hr) and 1500 Kg/hr (3300lb/hr) respectively. The blenders utilize TSM slide valve design and patented reverse-flight auger mixing technology. This combination provides superior accuracies, blend ratios and mixing homogeneity that is not achievable by competitive systems. All components are blended by weight, based on the preset blend ratios entered on the touch screen. Each component is metered separately into a single weigh hopper, which measures and controls their percentage.



Patented Mixing Technology
Reverse Flight Auger

www.tsm-controls.com

OPTIMIX MK2 1000/1500

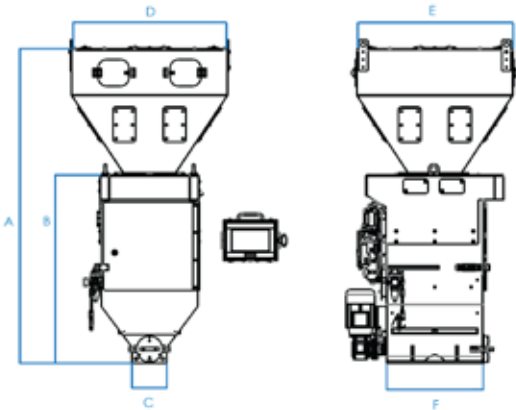
Advanced Dosing Solutions

BLENDER MODEL	STD. NO. OF COMPONENTS	MAX. NO. OF COMPONENTS	STD. BATCH SIZE	STD. UNIT THROUGHPUT	EASY DRAIN	MAX. NO. OF SIDE FEEDERS	MAX. MICRA-DOSE SIDE FEEDERS	MAX. POWDER SIDE FEEDERS	MAX AUGER SIDE FEEDERS	LIQUID DOSING SIDE FEEDER	INTERNAL AUTO-CLEAN	BIN BLOW DOWN AUTO-CLEAN	MATERIAL BYPASS AUTO-CLEAN	AUTO-DRAIN
OPTI-MIX 1000	4	8	7.5kg	1000 kg/hr (2200 lb/hr)	No	4	4	2	4	Opt	Opt	Opt	Opt	N/A
OPTI-MIX 1000 Easy Drain	6	8	7.5kg	1000 kg/hr (2200 lb/hr)	Yes	2	2	0	0	Opt	Opt	Opt	Opt	Opt
OPTI-MIX 1500	4	8	12kg	1500 kg/hr (3300 lb/hr)	No	4	4	2	4	Opt	Opt	Opt	Opt	N/A
OPTI-MIX 1500 Easy Drain	6	8	12kg	1500 kg/hr (3300 lb/hr)	Yes	2	2	0	0	Opt	Opt	Opt	Opt	Opt

Specifications

Blender Weight	(kg / lb)	180 / 396
Max Material Temp	(°C / °F)	70 / 158
Max Optional Material Temp	(°C / °F)	130 / 266
Mix Chamber Discharge Hole	(mm/")	101.9 / 4.0

Dimensions



BLENDER MODEL	A	B	C	D	E	F
OPTI-MIX 1000	1526mm 60.08"	913mm 35.95"	170mm 6.69"	760mm 29.92"	760mm 29.92"	470mm 18.50"
OPTI-MIX 1000 Easy Drain	16.91mm 66.57"	921mm 36.26"	170mm 6.69"	760mm 29.92"	1150mm 45.30"	470mm 18.50"
OPTI-MIX 1500	1576mm 62.05"	963mm 37.93"	170mm 6.69"	760mm 29.92"	760mm 29.92"	470mm 18.50"
OPTI-MIX 1500 Easy Drain	1741mm 68.54"	971mm 38.23"	170mm 6.69"	760mm 29.92"	1150mm 45.30"	470mm 18.50"

European Office (Headquarters)

TSM

TSM Control Systems,
Finnabair Industrial Estate,
Dundalk, Co. Louth,
Ireland

Tel: +353-42-933-5560

Email:

General: info@tsm-controls.com
Sales: sales@tsm-controls.com
Support: service@tsm-controls.com

North America Regional Office

TSM Inc.

1505 Johnson Ferry Road,
Marietta, GA 30062, USA

1404 Joliet Road,
Romeoville, IL 60446, USA

Tel: (770)-886-6630

Email:

General: info@us.tsm-controls.com
Sales: sales@us.tsm-controls.com
Support: service@us.tsm-controls.com

Asia-Pacific Regional Office

TSM Taiwan

No.13 Siangshang 1st Street,
West District,
Taichung City 403,
Taiwan

Tel: +886-4-2472-8185

Email:

General: info@tsm-controls.com.tw
Sales: sales@tsm-controls.com.tw
Support: service@tsm-controls.com.tw

China Regional Office

TSM China

Room 2423, No. 983, International Port
Center (IPC), HuangPu Avenue (East),
HuangPu District, GuangZhou City,
China

Tel: +86-139-2506-2596

Email:

General: china@tsm-controls.com
Sales: china@tsm-controls.com
Support: china@tsm-controls.com