

Solutions Through Partnership

OPTIMIX MK2 100 SERIES

Advanced Dosing Solutions

TSM

Features

- Faster Product Changes
- Continuous Homogeneous Mixing
- Increased Regrind Usage
- Product Consistency
- High Accuracy Dispensing up to 0.01% of batch

User Interface

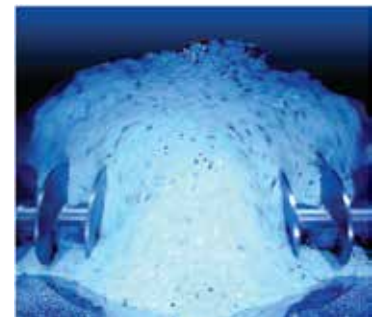
- Intuitive Operator Functionality
- Comprehensive Report / Alarm Management
- Built-in Trending & Data History Management
- Industry Standard Communication Protocols
- Material Usage / Inventory Statistics & Reports



100 OPTIONS

- Extrusion Control
- Flange Adapters
- Offline Blending
- Automatic Cleaning
- Integrated Material Handling

OPTI-MIX 100 Batch Blenders can accommodate up to four components while providing throughput rates up to 100 kg/hr (330lb/hr). OPTI-MIX 100 utilizes TSM slide valve design and patented reverse-flight auger mixing technology. This combination provides superior accuracies, blend ratios and mixing homogeneity that is not achievable by competitive systems. All components are blended by weight, based on the preset blend ratios entered on the touch screen. Each component is metered separately into a single weigh hopper, which measures and controls their percentage.



**Patented Mixing Technology
Reverse Flight Auger**

OPTIMIX MK2 100

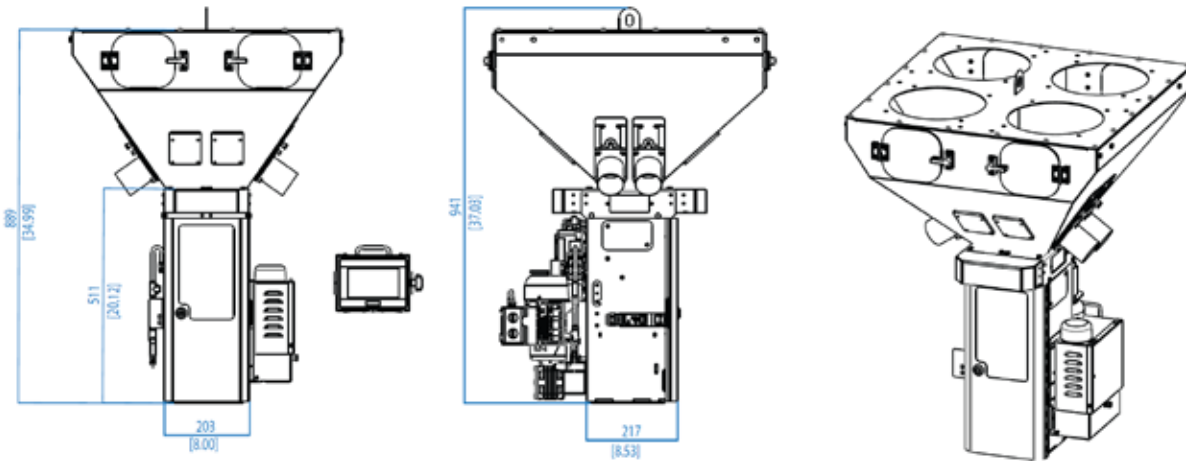
Advanced Dosing Solutions

BLENDER MODEL	STD. NO. OF COMPONENTS	MAX. NO. OF COMPONENTS	STD. BATCH SIZE	STD. UNIT THROUGHPUT	EASY DRAIN	MAX. NO. OF SIDE FEEDERS	MAX. MICRA-DOSE SIDE FEEDERS	MAX POWDER SIDE FEEDERS	MAX AUGER SIDE FEEDERS	LIQUID DOSING SIDE FEEDER	INTERNAL AUTO-CLEAN	BIN BLOW DOWN AUTO-CLEAN	MATERIAL BYPASS AUTO-CLEAN	AUTO-DRAIN
OPTI-MIX 100	4	6	1.0kg	100 kg/hr (330lb/hr).	No	2	2	0	0	N/A	N/A	N/A	N/A	N/A

Specifications

Blender Weight	(kg / lb)	50 / 110
Max Material Temp	(°C / °F)	70 / 158
Max Optional Material Temp	(°C / °F)	130 / 266
Mix Chamber Discharge Hole	(mm/”)	50 / .0

Dimensions



European Office (Headquarters)

TSM

TSM Control Systems,
Finnabair Industrial Estate,
Dundalk, Co. Louth,
Ireland

Tel: +353-42-933-5560

Email:

General: info@tsm-controls.com
Sales: sales@tsm-controls.com
Support: service@tsm-controls.com

North America Regional Office

TSM Inc.

1505 Johnson Ferry Road,
Marietta, GA 30062, USA

1404 Joliet Road,
Romeoville, IL 60446, USA

Tel: (770)-886-6630

Email:

General: info@us.tsm-controls.com
Sales: sales@us.tsm-controls.com
Support: service@us.tsm-controls.com

Asia-Pacific Regional Office

TSM Taiwan

No.13 Siangshang 1st Street,
West District,
Taichung City 403,
Taiwan

Tel: +886-4-2472-8185

Email:

General: info@tsm-controls.com.tw
Sales: sales@tsm-controls.com.tw
Support: service@tsm-controls.com.tw

China Regional Office

TSM China

Room 2423, No. 983, International Port
Center (IPC), HuangPu Avenue (East),
HuangPu District, GuangZhou City,
China

Tel: +86-139-2506-2596

Email:

General: china@tsm-controls.com
Sales: china@tsm-controls.com
Support: china@tsm-controls.com